

32K 3-Way Manifold Storz Outlet x Storz Inlet x (2) Threaded Male Outlet Instruction Manual

Pg 1



Read this Instruction manual before use.

Using this device without understanding this products' operation and care may lead to injury.

If you do not understand how to use this product and do not receive proper training, DO NOT use this product. Call your distributor for more information.



75 Highland Dr. T: 800-420-4673
Putnam, CT 06260 F: 800-772-0255
kochek.com

WARRANTY

32K Instruction Manual Pg 2

- Kochek Co Inc. warrants to the original purchaser and all subsequent purchasers of the Kochek products that the product is free from defects in material and workmanship during a (5) five year period from the date of its sale by Kochek Co. Inc.
- Kochek Co. Inc.'s obligation under this warranty is specifically limited to replacing or repairing any product which is determined by our inspection to be in a defective condition attributed to our manufacture or design. If Kochek Co. Inc. determines the product is defective, we will repair or replace the product during the warranty period. The purchaser or beneficiary must notify Kochek Co. Inc. of any alleged defect within a reasonable time period after purchase.
- If we determine that the product is defective, then we will replace the product, repair the product or refund the purchased price, at Kochek Co. Inc.'s election.
- The warranty is a LIMITED WARRANTY. The original purchaser of the product and any subsequent purchaser of the product and any person who is an intended or unintended beneficiary of the product shall not be entitled to recover from Kochek Co. Inc. and consequential or incidental damages for injury to person and / or property resulting from any defective product manufactured or assembled by us. It is agreed that the price stated and paid for the product is in part consideration for limiting Kochek Co. Inc.'s liability.
- This is a limited Expressed Warranty Only. Kochek Co. Inc. EXPRESSLY DISCLAIMS WITH RESPECT TO THE PRODUCT ALL IMPLIED WARRANTIES OF **MERCHANTABILITY** AND ALL IMPLIED WARRANTIES OF **FITNESS FOR A PARTICULAR PURPOSE**.
- There are NO WARRANTIES of any nature made by Kochek Co. Inc. beyond that which is stated in this Warranty.

SAFETY

32K Instruction Manual Pg 3

Meaning of SAFETY WORDS



DANGER

Indicates an imminently hazardous situation which, if not avoided, will result in death or serious injury.



WARNING

Indicates a potentially hazardous situation which, if not avoided, could result in death or serious injury.



CAUTION

Indicates a potentially hazardous situation which, if not avoided, may result in minor or moderate injury.

SAFETY and CAUTIONS



DANGER

This equipment is to be used by trained fire fighting personnel only. Failure to obtain proper training may result in severe injury or death.



DANGER

Do not exceed maximum operating pressure. Exceeding the maximum rated pressure for this appliance may cause malfunction, or failure resulting in severe injury or death.



DANGER

Failure of fittings and hoses can result in injury. Use caution not to exceed hose pressures as stated in NFPA 1961 for the type of hose being used.



DANGER

Make sure all connections are secure and complete. Failure to ensure proper connection may result in leaks or cause the devices to become disconnected under pressure resulting in injury or death.



DANGER

Open and close all valves slowly. Failure to operate valves slowly may cause water hammer, which may result in damage or failure of hose, coupling devices, and appliances leading to injury or death.



WARNING

Do not use if damaged. Damage to product may cause malfunction or failure. Remove from service until unit can be repaired.



WARNING

Check for damage or worn coupling connections. Damage or worn connections may become disconnected under pressure. Remove from service to be repaired by a Kocheck Co. Inc. certified repair facility.



CAUTION

For use with fresh or salt water, with or without fire fighting foam.



WARNING

Altering of this device may reduce its operating effectiveness, or safety. Do not alter or change in any way from its intended design.

SPECIFICATIONS

32K Instruction Manual Pg 4

DIMENSIONS

- Height: 16"
- Length: 17"
- Width: 21"
- Weight: approx. 34 lbs.

CONSTRUCTION

- Aluminum Body
- Anodized Aluminum Ball Valves

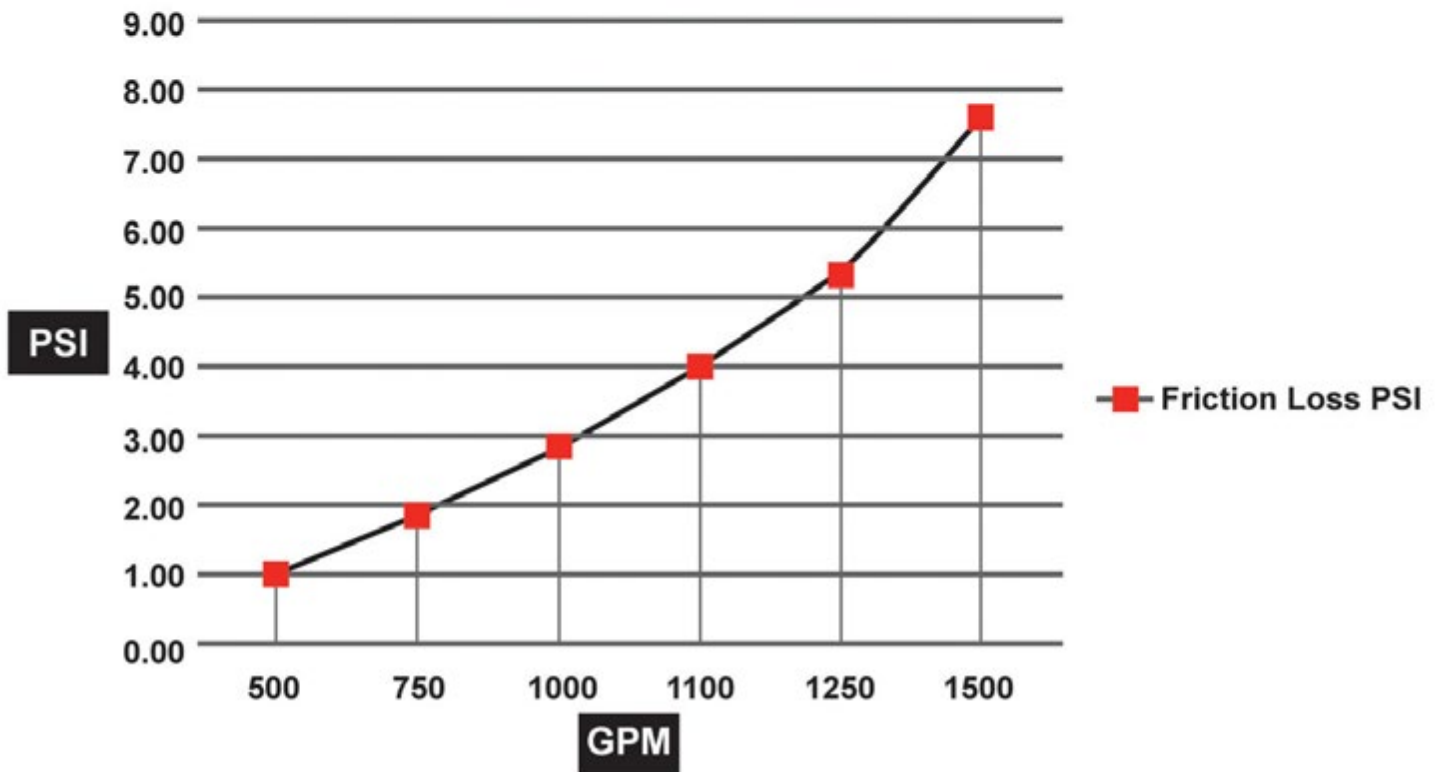
OPERATION PRESSURES

- Normal operating pressure are from 100 to 200 PSI

FRICITION LOSS

Several different configurations and valve discharge use may effect the actual friction loss created in the field. The fire department should evaluate actual friction loss during training.

FACTORY TEST RESULTS



OVERVIEW

32K Instruction Manual Pg 5

 **WARNING**

This manifold may also have a pressure relief valve to automatically release excess pressure in the hose line. The relief valve must be set prior to use. Excess pressure in the hose line may cause failure of the hose leading to injury.

 **CAUTION**

Dirt or debris in the relief valve may prevent the relief valve from operating or closing, causing the relief valve to operate prematurely with subsequent loss of pressure.

To properly set the pressure at which the relief valve will operate please see the included operating supplement for the pressure relief valve.

 **DANGER**

The relief valve has no field serviceable parts. Never try to repair this valve unless you are a certified repair person. Improper repair could result in serious injury and/or death.

 **WARNING**

During operation the relief valve will discharge water at high pressure. Exercise caution to keep all persons away from the relief valve discharge.

OPERATION

32K Instruction Manual Pg 6

CAUTION

Place the manifold on level ground to prevent the valve tilting.

Do not use if damaged. Damage to product may cause malfunction or failure. Remove from service until unit can be repaired.

DANGER

- Close all ball valves before connecting hoses.
- Fully attach all the hose connections to manifold.

Make sure all connections are secure and complete. Failure to ensure proper connection may result in leaks or cause the devices to become disconnected under pressure, resulting in injury or death.

WARNING

- Make sure that supply hose is without kinks or bends and needs to be straight for a minimum of 20 feet before and behind the valve to minimize the possibility of the valve moving and causing injury.
- Slowly fill the hose line with water.
- Open an unused 2 ½" valve to bleed off air. Close valve when air has been exhausted.
- When hose line is filled, slowly open the desired valves then slowly increase pressure.

DANGER

- Stand back from manifold when pressurizing the supply line.
- Open and close valves slowly to avoid water hammer.

Open and close valves slowly. Failure to operate valve slowly may cause water hammer, which could result in damage or failure of hose, coupling devices and appliances leading to injury or death.

WARNING

Always open and close valves fully. Do not regulate water flow or pressure with the ball valves. Normal operating pressures are from 100 to 200 PSI.

OPERATION

32K Instruction Manual Pg 7

 **DANGER**

On any appliance with a non-threaded coupling, (i.e. Storz) check the locking device on the coupling for damage and ensure proper operation. It should be clean, clear and free of damage. If locking device is malfunctioning, repair or replace the lock. (Kocheck Part # SLD5)

 **DANGER**

WHEN OPERATIONS ARE COMPLETE:

- Bleed off any excess pressure in the hose lines before you attempt to disconnect any hose or apparatus and disconnect and drain hose lines.
- Disconnect hoses and drain water from the manifold and relief valve.
- Check all valve handles to ensure they are in closed position.
- Return valve to its proper mounting bracket in fire apparatus and secure.
- Periodically check ball valves to ensure proper operation, always return handles to closed position for storage.

Check for damaged or worn coupling connections. Damaged or worn connections may become disconnected under pressure. Remove from service and repair appropriate parts.

Do not use if damaged. Damage to product may cause malfunction or failure. Remove from service until unit can be repaired by a Kocheck Co. Inc. certified repair facility.

 **WARNING**

In case of leakage replace gaskets as needed.

Check all screws and bolts to ensure they are securely tightened.

 **WARNING**

Check gaskets and swivels to ensure proper operation. Repair or replace as needed. If repairs cannot be made immediately, remove from service until repaired by a Kocheck Co. Inc. certified technician.

Foam may be used with this appliance. Make sure to flush completely with fresh water after use. Some foam concentrates may leave residue that may cause corrosion or become sticky and interfere with the operation and shorten the service life of this appliance.

CARE AND MAINTENANCE

32K Instruction Manual Pg 8

Salt water may be used with this appliance. Be sure to flush with large amounts of fresh water after use with salt water. Saltwater may shorten the service life of the appliance due to corrosion.

Flush with fresh clean water after use to remove dirt and debris. This is especially important if salt water or foam has been used in this appliance

Lubricate as necessary with Kochek Co. Inc. ST2 lubricant.

Use only recommended lubricant, improper lubricants may cause premature failure of o-rings and seals.

Apply lubricant to the following points to ensure smooth operation:

- Lightly lubricate the face of the ball inside the valve through each of the four(4) inlet/outlet points.
- Turn the valve handle through its full range of motion several time to spread the lubricant evenly.



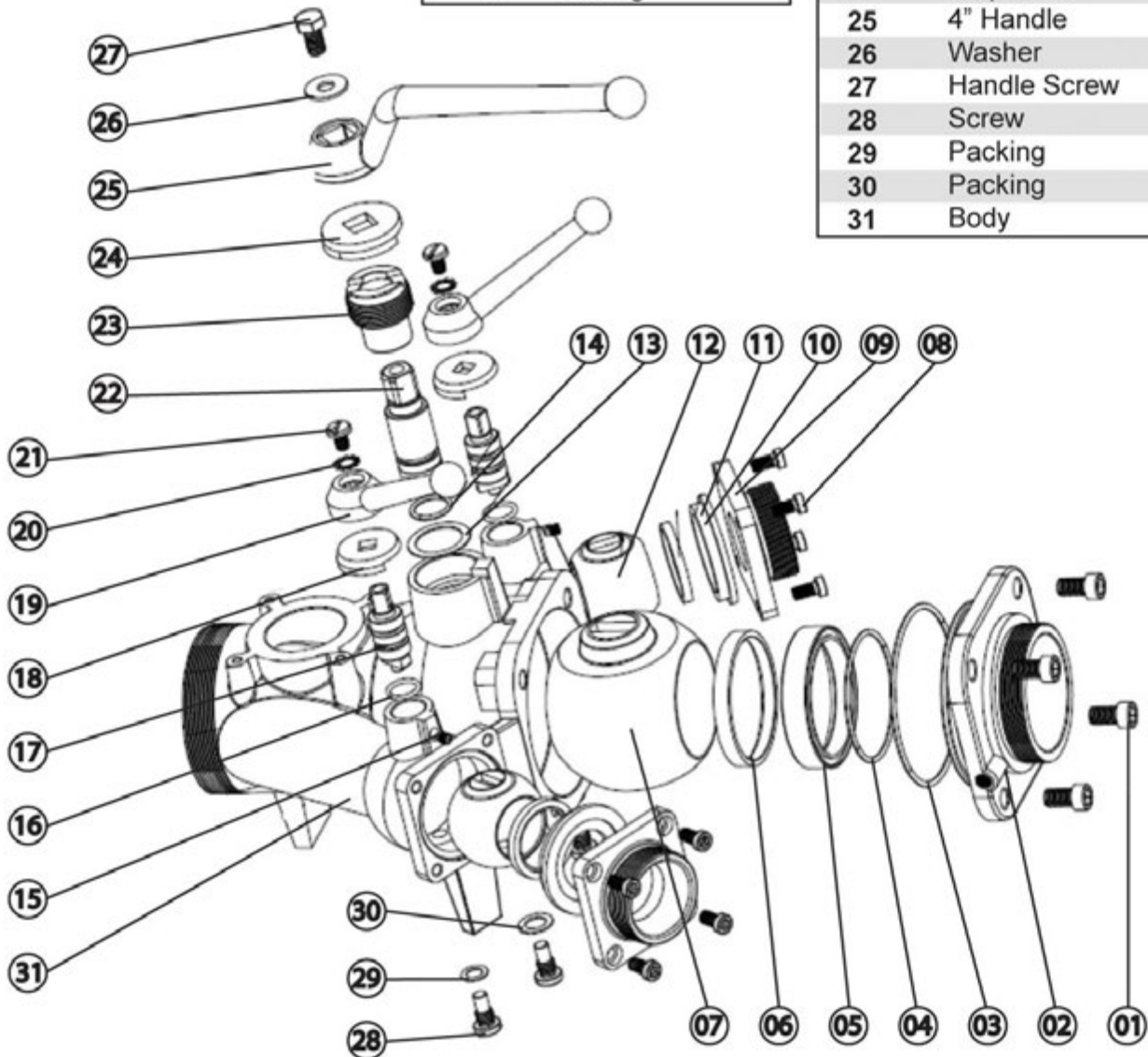
32K PARTS LIST

32K Instruction Manual Pg 9

Item	Description
01	Screw
02	4" Adapter
03	O-Ring
04	O-Ring
05	Gland Washer
06	Gland
07	Ball

Item	Description
08	Screw
09	2.5" Adapter
10/11	Gland + Seat
12	Ball
13	Seat
14	O-Ring
15	Screw
16	O-Ring

Item	Description
17	Stem
18	Stop Disk
19	2.5" Handle
20	Washer
21	Handle Screw
22	4" Stem
23	Stem Bushing
24	Stop Disk
25	4" Handle
26	Washer
27	Handle Screw
28	Screw
29	Packing
30	Packing
31	Body

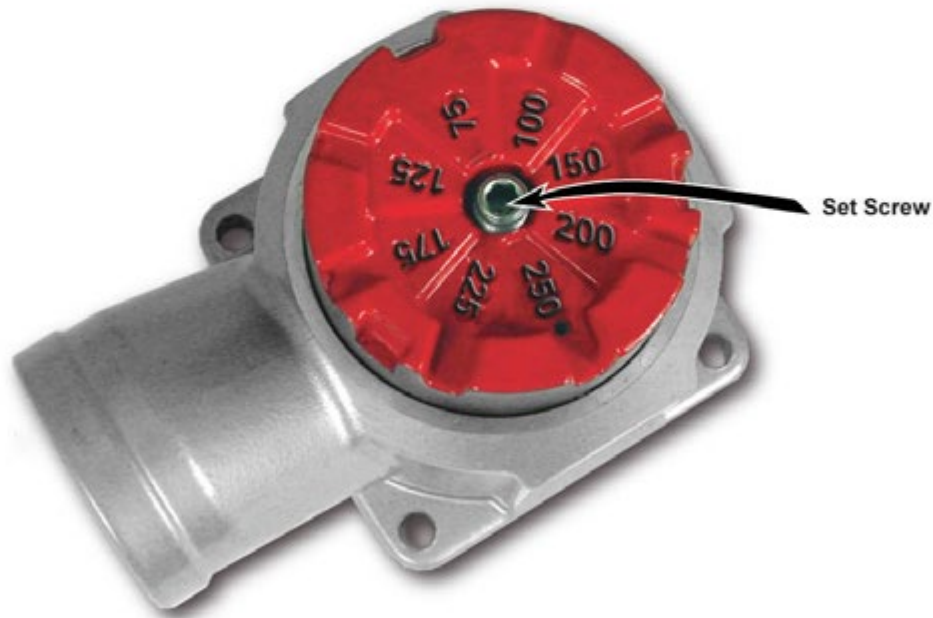


—Adjustment Instructions— 32K Instruction Manual Pg 10

Relief Valve RV-PRV

- 1) Relief Valve - The relief valve leaves the factory set to relieve at 100 PSI.
- 2) To change the setting to 75 through 250 PSI turn the set screw **LEVEL** with the number position indicated.
- 3) 6 MM Allen wrench is required to move set screw.

- Easy to adjust Pressure Relief Valve



RELIEF VALVE